

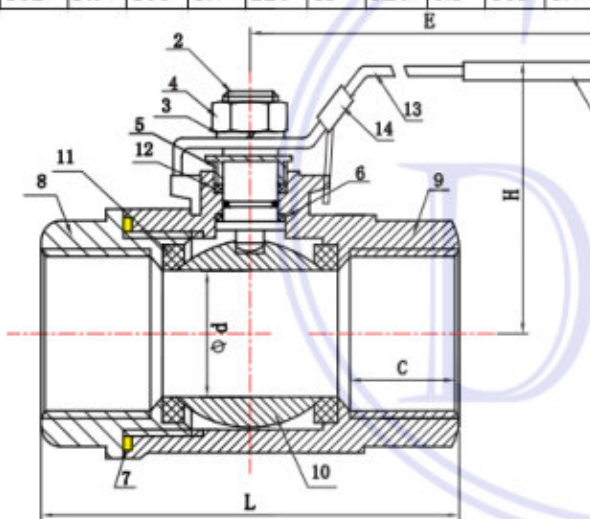
316 Stainless Steel 1000 PSI Full-Port Ball Valve

DIMENSIONS

Size		D		L		E		H		C		Wt	
in	mm	inch	mm	inch	mm	inch	mm	inch	mm	inch	mm	kg	lbs
1/4	6.35	0.5	11.5	2.2	55	4	102	0.6	46	0.6	15	0.23	0.51
3/8	9.65	0.5	12	2.2	55	4	102	1.8	46	0.6	15	0.23	0.51
1/2	12.7	0.6	15	2.6	65	4.1	105	2	50	0.6	16	0.32	0.71
3/4	19.1	0.8	20	2.9	74	4.7	120	2.2	55	0.7	18	0.48	1.06
1	25.4	1	25	3.2	82	5.5	140	2.6	65	0.7	18	0.73	1.61
1 1/4	31.8	1.3	32	3.8	96	5.5	140	3.1	80	0.8	20	1.10	2.43
1 1/2	38.1	1.5	38	4.2	106	6.7	170	3.5	90	0.9	22	1.75	3.86
2	50.8	1.9	49	4.7	120	7.3	185	3.9	100	0.9	22	2.20	4.85
2 1/2	63.5	2.6	65	6.2	158	8.7	220	5.1	130	1	26	4.80	10.58
3	76.2	3.1	78	7.2	183	9.6	245	5.7	145	1.4	35	6.70	14.77
4	102	3.9	100	8.7	220	13	320	6.5	165	1.7	42	13.80	30.42

MATERIAL LIST

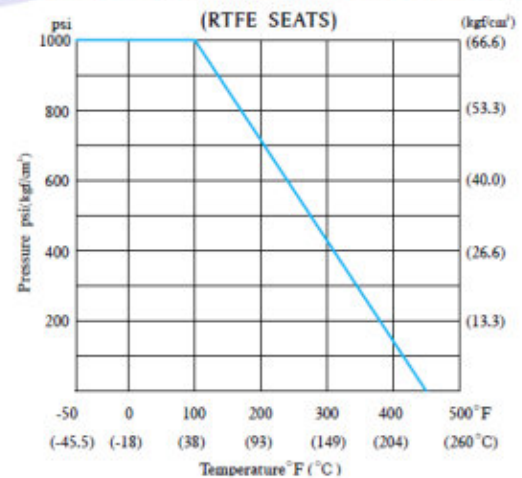
No.	Part Name	Material
1	Plastic sleeve	PVC
2	Stem	304
3	Hand washer	AISI 316
4	Handle nut	A2-70/A194-8
5	Gland nut	AISI 304
6	Thrust washer	PTFE
7	Body seal	PTFE
8	End cap	A351-CF8M
9	Body	A351-CF8M
10	Ball	A276-316
11	Ball seats	PTFE
12	Stem seal	PTFE
13	Handle	AINI SS
14	Lock	AINI SS



PRESSURE TEMPERATURE RATINGS

DESIGN FEATURES

- Steam rating: 150 psi WSP
- Blow-out-proof stem design
- Body: ASTM A351 Gr.CF8M
- Ball: SS316
- Stem: SS316
- Seat: Reinforced Teflon
- Temperature range: -4° to 375° F
- TEST STANDARD: API 598
- Vacuum service to 29" Hg



DTC reserves the right to modify specifications and/or design parameters without notice.